

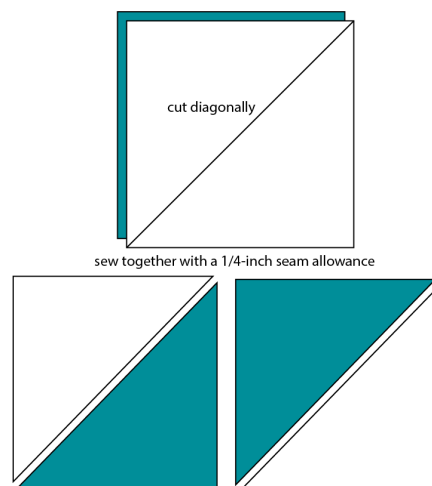
Churn Dash Quilt Block Tutorial

Cutting:

- Light batik: cut two $4\frac{7}{8}$ " squares
- Print batik: cut two $4\frac{7}{8}$ " squares
- Teal batik: cut four $2\frac{1}{2}$ " squares
- Light batik: cut five $2\frac{1}{2}$ " squares

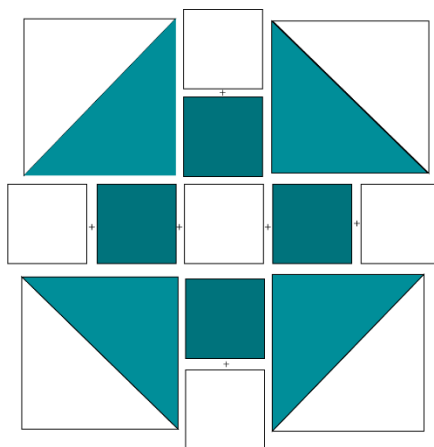
Piecing the half square triangle (HST) blocks:

- Place the light batik square on top of the print batik square and then cut diagonally.
- Use a $\frac{1}{4}$ " seam allowance.
- Sew the two pieces together, your block should measure $4\frac{1}{2}$ -inches square, trim off the dog-eared corners.

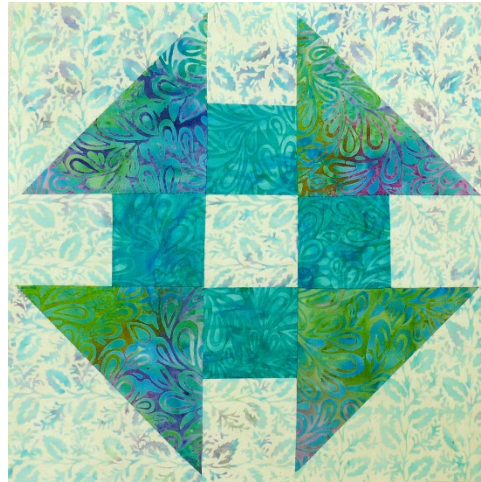
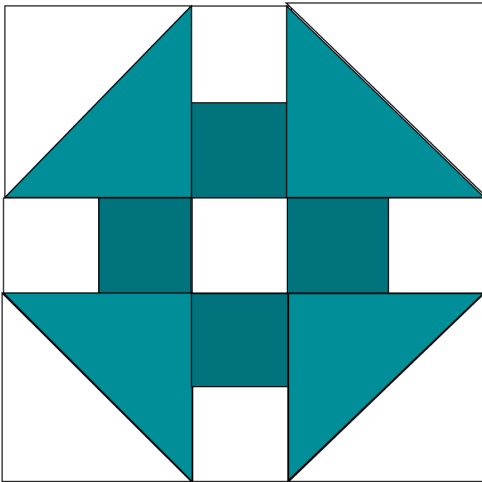
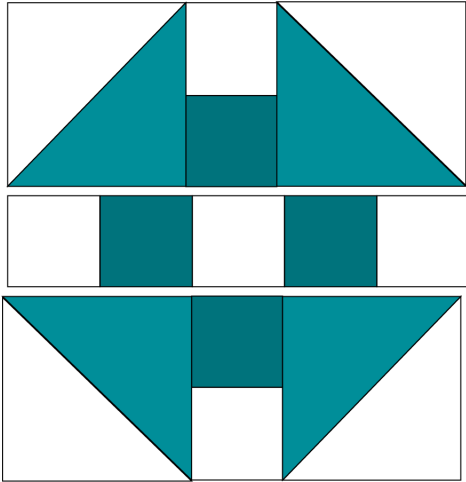


Piecing the block

- Sew the light batik and teal batik $2\frac{1}{2}$ " squares together as shown in the diagram below.
- Layout your block as shown.



Sew the blocks into rows and then sew the rows together to make a 10½" Churn Dash quilt block.



I'm Connie Kresin Campbell and I love to create and share quilt tutorials and patterns. I'm an ambassador for Island Batik so you'll see lots of projects made with beautiful batiks. I've also done guest posts on AccuQuilt's blog and share tutorials using the GO! cutting machine and dies. I hope you will enjoy your visit at [Freemotion by the River](http://FreemotionbytheRiver.com) and find inspiration and goodies.